

rope press.

# Basic Risograph Guide

## Contents

1. Intro
2. File set up, Spot Colours and Layering
3. Exporting Files
4. Paper and Print area
5. Images and Text

## 1. Intro

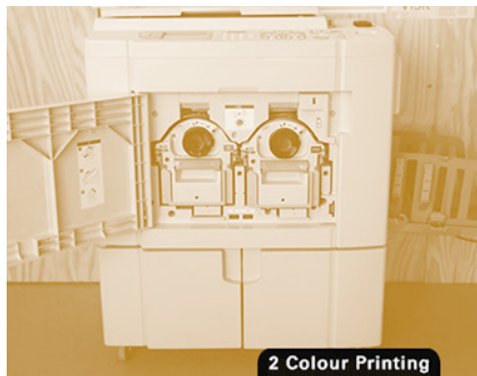


Our risograph press

Risographs are a type of stencil duplicator.

Art works are created in a very similar way to screen printing.

A stencil is made inside the machine which has a negative image of your **artwork** etched into it, this stencil is called a **master**.



Two colour drums inside

**Artworks** are assigned to a **colour drum** of choice, this is indicated by the colour your files are labelled.

Example for experienced risograph users printing simple posters

blue.pdf  
red .pdf



Artwork masters on drums

Our two colour press can print two colour and upto two art works at a time meaning faster turnaround and better print registration.

## 2. File setup check list

To ensure minimal setbacks and to ensure artwork is delivered on time we ask that you send your artwork as follows:

1. pdf files labelled as the colour they will be printed  
*\*(Except when printing a booklet in multiple colours - See booklet print guides)*
2. Colour JPEG file of your artwork so we can proof your artworks
3. Original artwork file, packaged InDesign file with links and images  
Illustrator or Photoshop files (upto CS6) Please save backwards compatible files if using newer versions.

We ask for these to eliminate issues such as delays in print schedule, to fix problems with the artwork and allow your print jobs and your experience of us in general to go as smoothly as possible.

Everyone who prints with us for the first time must give us all of the following any failure to do so or give us incomplete files may result a delays in orders and issues that we won't be held responsible. So get your files in to us right!



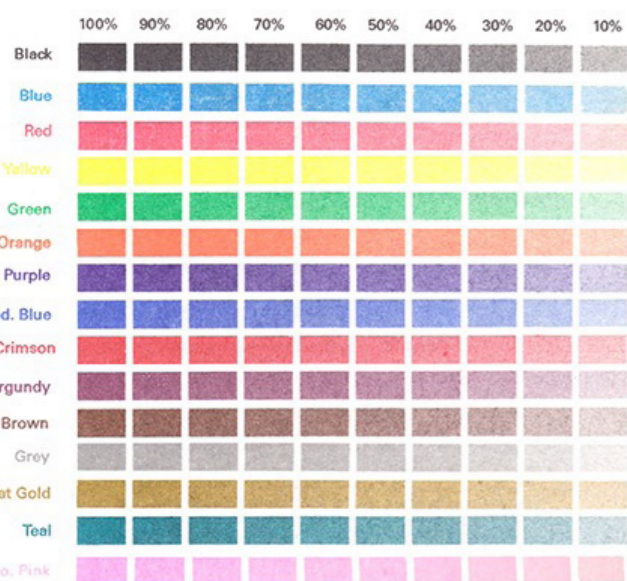
Photoshop and Illustrator can be used for any print artwork design except for sending us books and booklet work.



You can use indesign to send us any artwork for any type of print including Books and booklet work.

See this [link](#) for help on booklet artwork set up.

## 2.3 Spot colour and Opacity

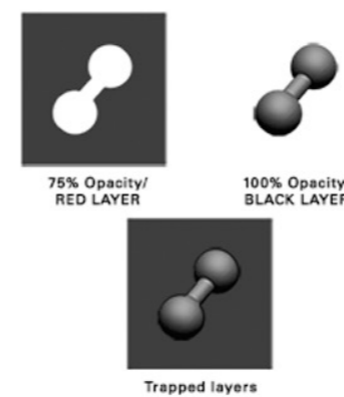


## 2.6 Layering and Layers

If more than one colour your artwork will be made from multiple layers. Each Layer will be made up of aspects of your artwork which will be printed in a particular colour.

The diagram **a** shows a red layer artwork, in this case the background colour being printed with a black layer (atom) of a different opacity.

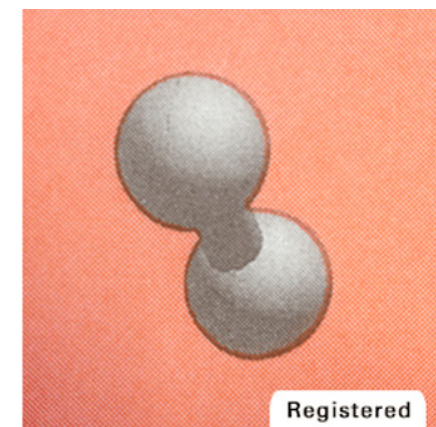
Miss-registration and misalignment of the artwork layers, diagram **b**, occurs naturally in the process and is minimised by **trapping** your artworks by adding **strokes**, diagram **c** onto your vector based artworks or Gaussian blurs or strokes in photoshop to your rasterised layers.



**a**

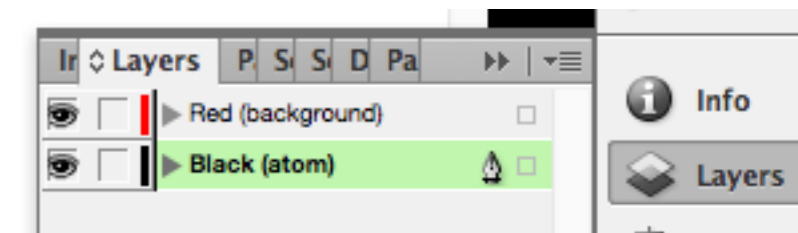


**b**



**c**

Examples of how layers are separated and labelled in indesign ->



## 3. Exporting files for print (not for books or booklets)

Saving Pdf's if they have been made following these instructions is easy!

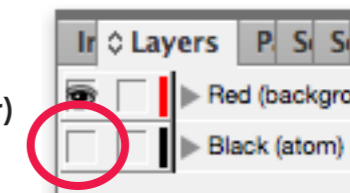
First make one layer hidden like below.



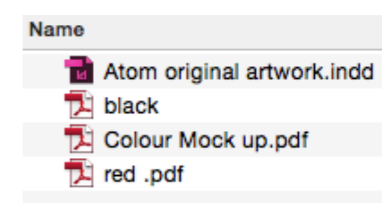
Then click **file> save as> \***  
(Photoshop + Illustrator)  
**export> \***  
(Indesign)

**Pdf> Highest Quality Print>**

Then alternate and repeat, turn off the other layer and export.



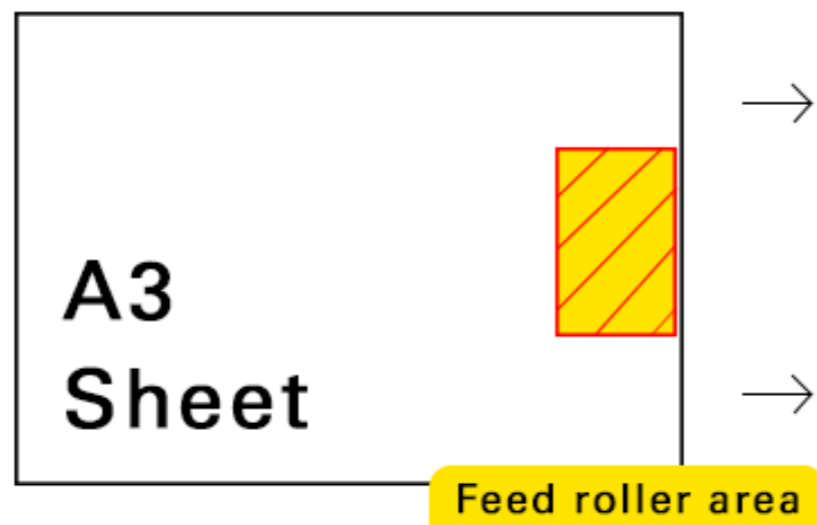
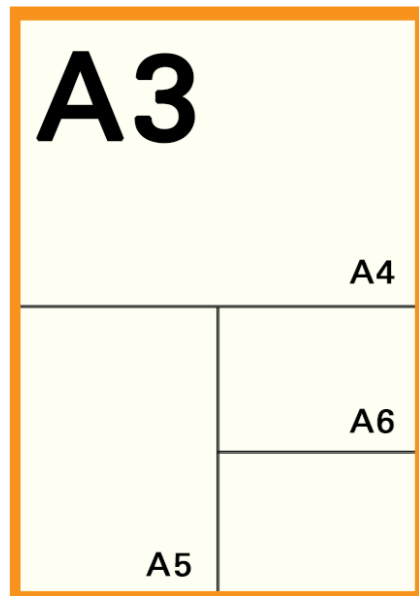
All your exported files should look like this.



Send your folder via drop box or compress your folder and send via wetransfer to our email.



## 4. Paper and Print Area



Risograph printers can't print full bleed A3 and can only print on uncoated papers

There is a small margin which equals roughly 4mm on the longest side and 6mm on the shortest making up the non print able area.

Maximum Print Area:

Maximum sheet size:  
**SRA3**

Paper weights:  
**60-300gsm\***

\*300gsm at times can be tricky and might require proof of you artwork before we print.

Try to avoid large areas of ink at the paper feed roller area to avoid track marks and imprinting on the reverse side of the paper.

Try and avoid large areas of ink and 100% print opacity to avoid tidal marks and inconsistency in the ink within your prints.

We will advise this to you if we feel you artwork might suffer from this.

## Please!

Leave a 10mm clear border on all prints and book pages. Keep this area clear of all sensitive and important information you don't want to be trimmed of by our guillotine.

This is only really relevant when printing A5 economy or when printing stationery and flyers.

## 5. Images and Text

Text at all times should be kept as vectors and as registration black / 100% CMYK to avoid small pixelated text.

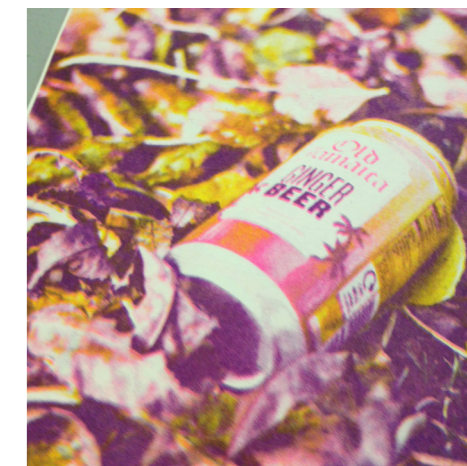
Please don't use Photoshop to create type. This can cause pixelation around edges and nobody wants that.



Images need to be no more than 600dpi. Think hi-resolution but not massive in size in cm or mb.

If linked files are of a larger dpi we will ask they be amended.

Unnecessarily large files make printing and preparing your art work a take more time.



For producing multiple colour artworks we can provide great advice both in our studio when visiting and on the phone but we would start by advising you look online for tutorials in colour separations, CMYK separations and duotones to find yourself the best way of creating your artworks.

We also offer full proofing serves when working with on print editions and books.